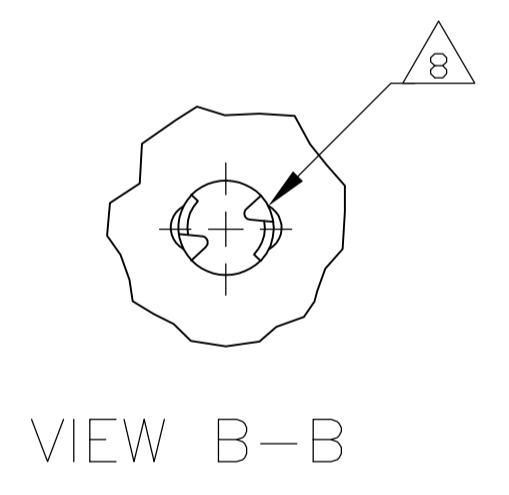
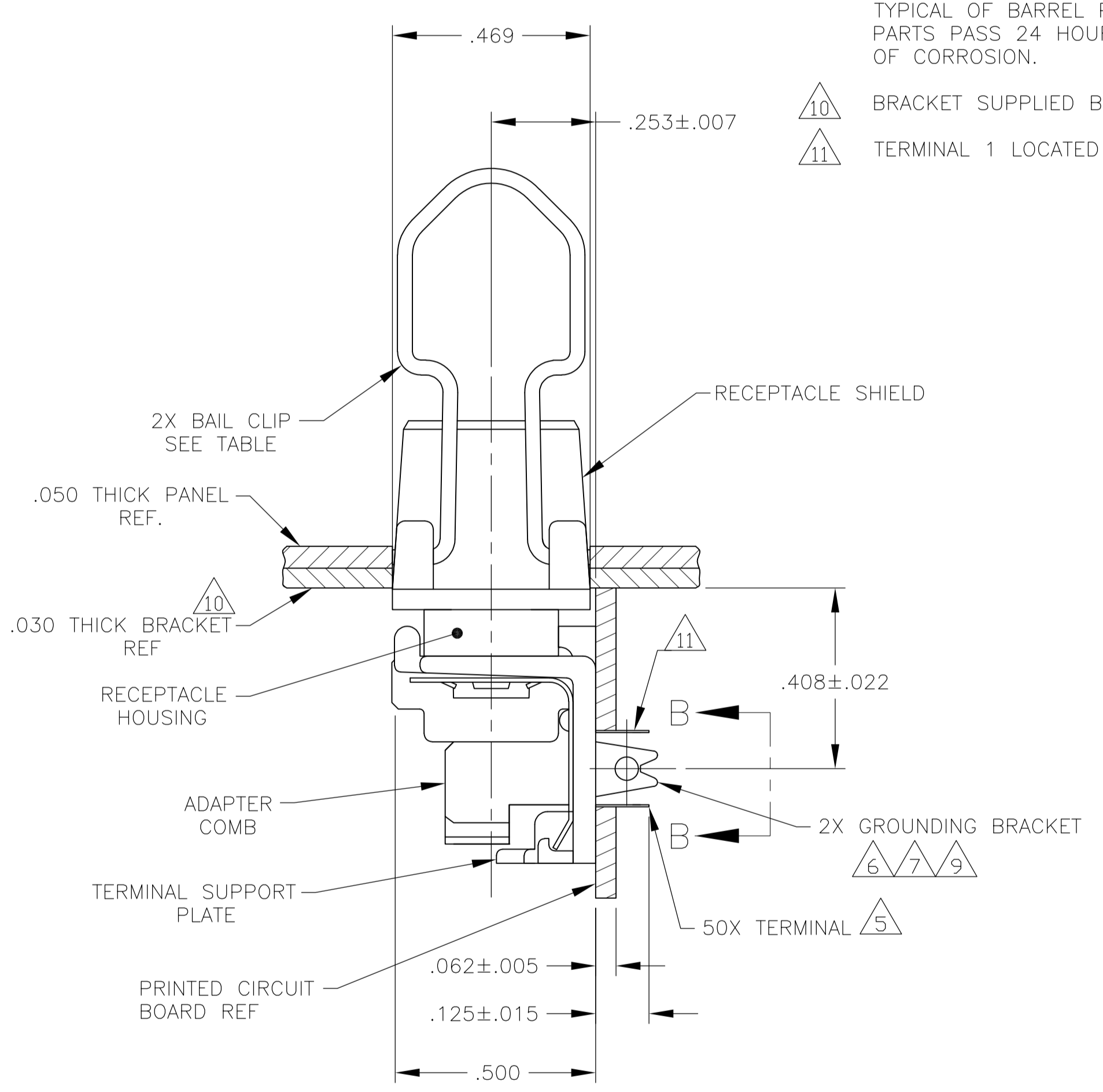
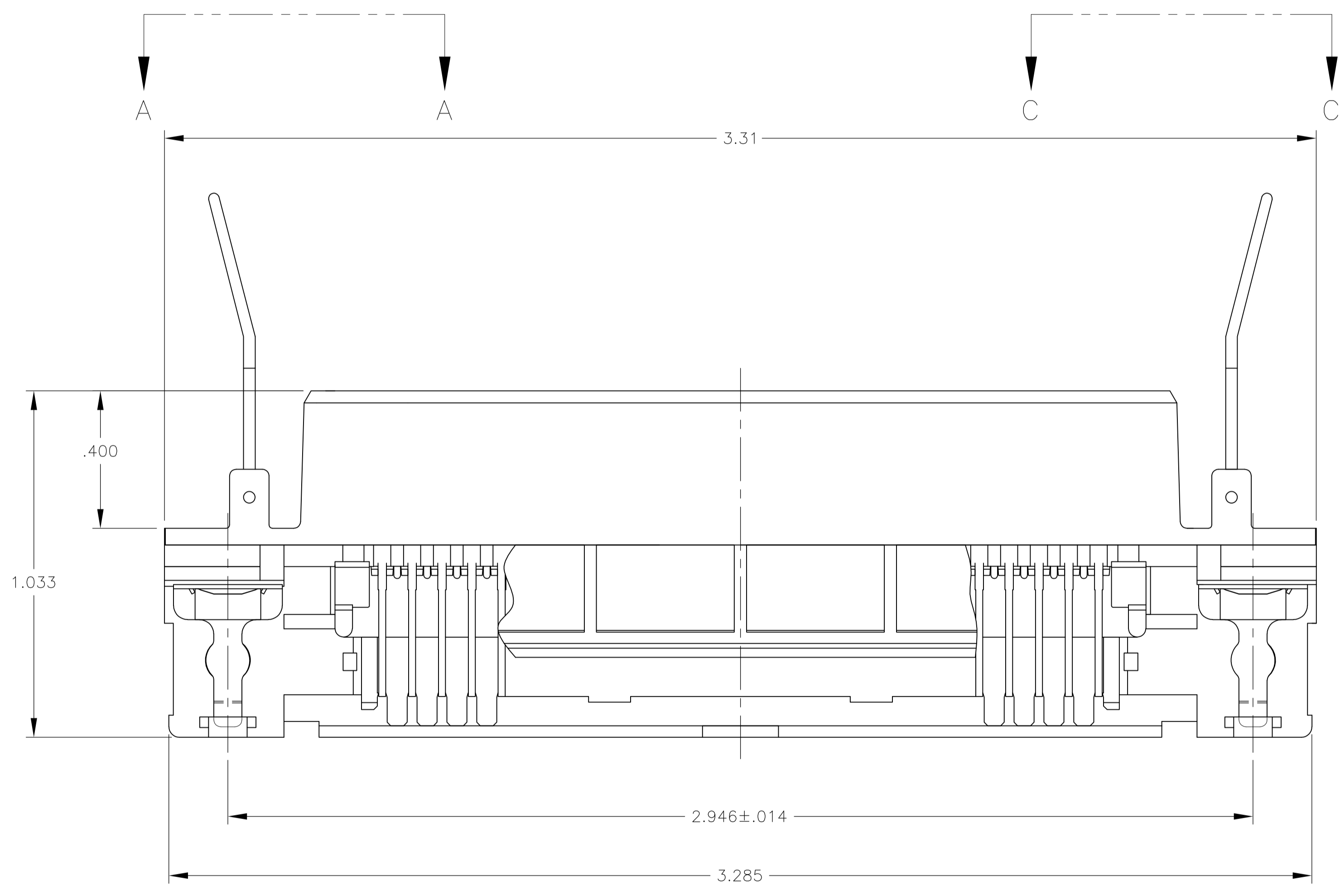
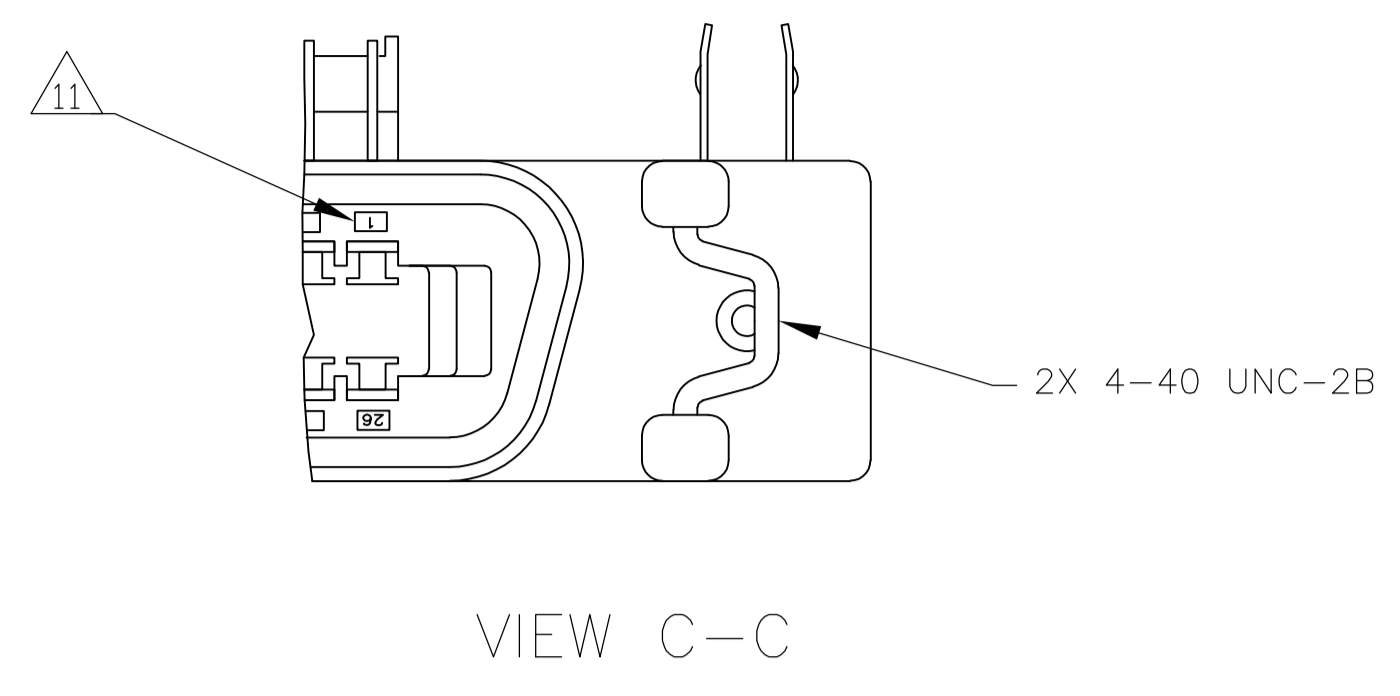
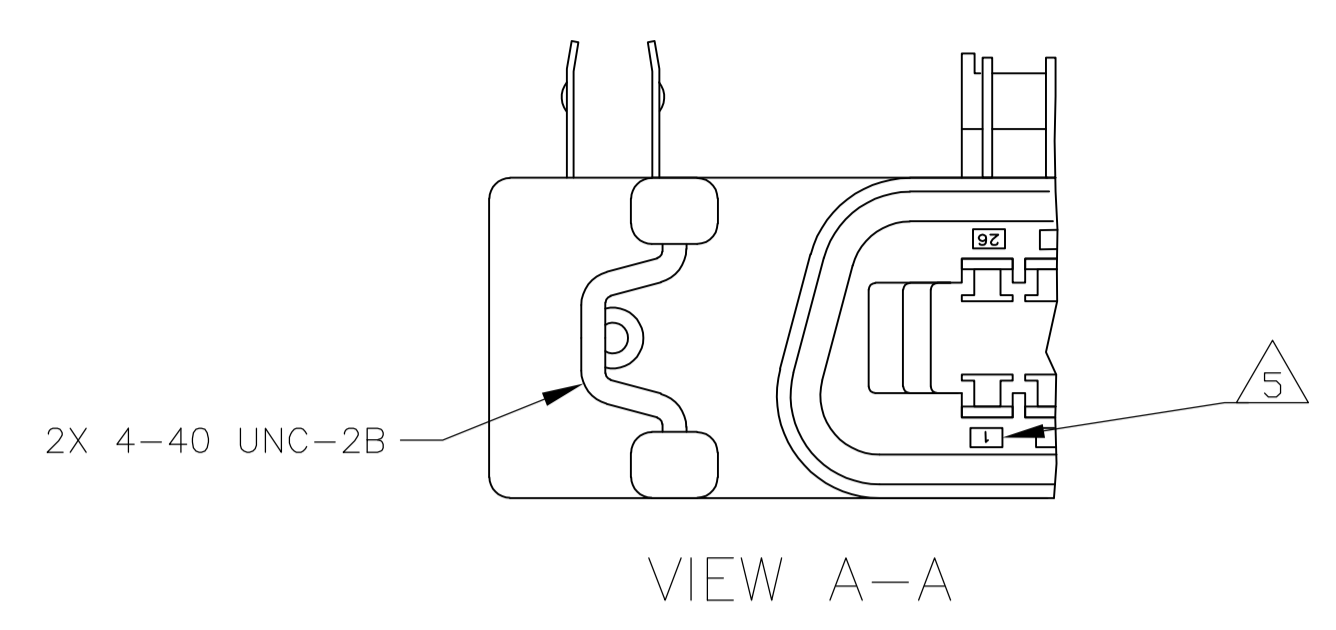
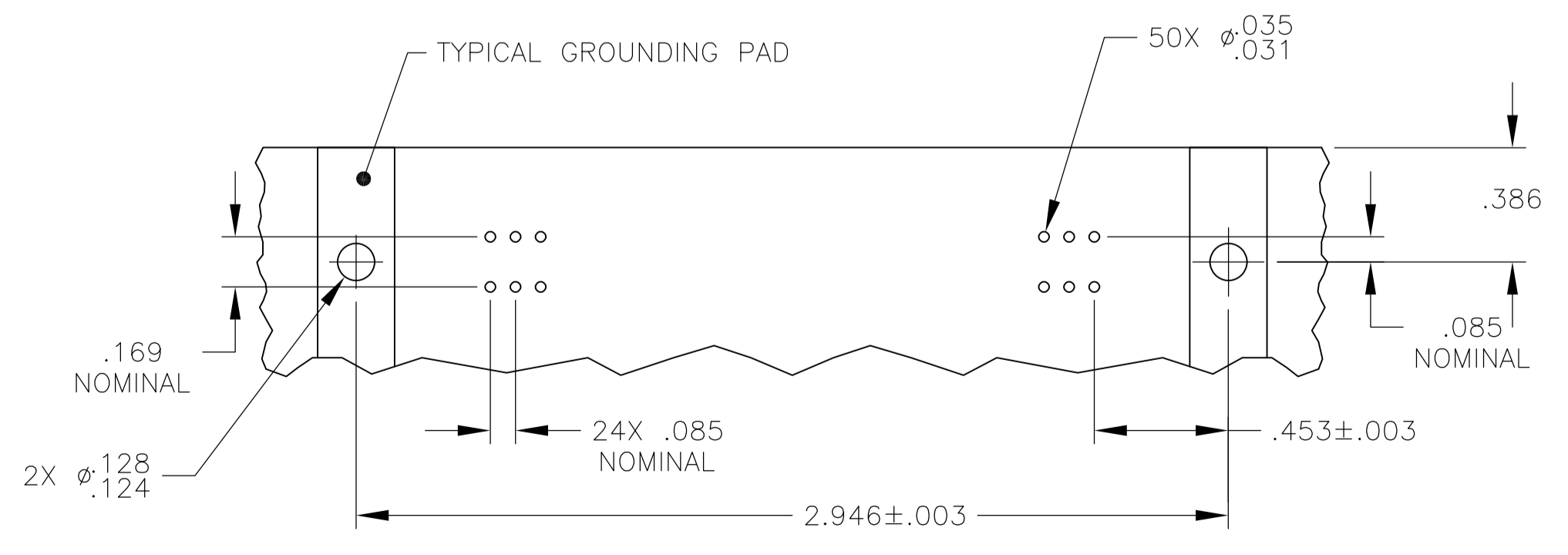


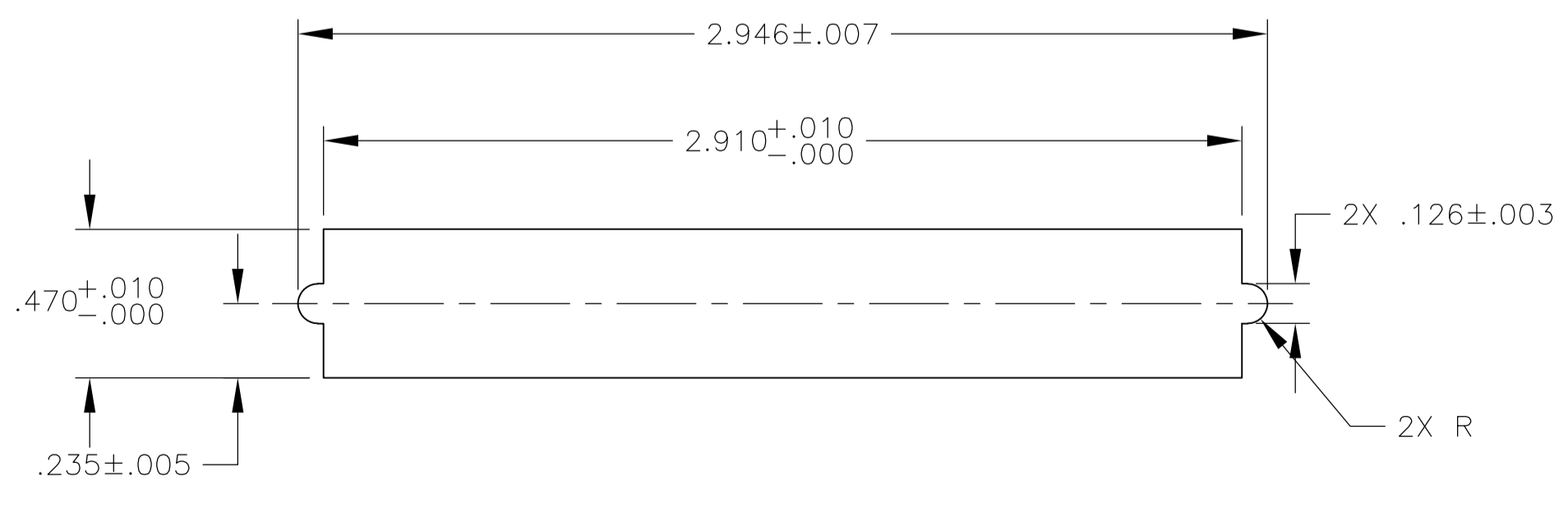
LOC		DIST		REVISIONS			
GP	00	REV	DATE	DESCRIPTION	DATE	BY	APPV
K		1	15/FEB/07	REVERSE PER ECO-08-007327	08/APR/08	BM	WM



- 1 MATERIAL:
 HOUSING & ADAPTER COMB: POLYESTER, BLACK.
 BAIL CLIPS: PASSIVATED STAINLESS STEEL.
 RECEPTACLE SHIELD: BRIGHT NICKEL PLATED OVER COPPER PLATED ZINC.
 TERMINALS - HIGH STRENGTH COPPER ALLOY PLATED WITH EITHER
 .000030 MIN GOLD PLATE OR GOLD FLASH OVER PALLADIUM NICKEL
 PLATE, .000030 MIN TOTAL ON MATING SURFACE. 3.05μm [.000120]
 MIN TIN-LEAD PLATE ON TAILS. ALL OVER 1.27μm [.000050] MIN
 NICKEL UNDERPLATE OVER ENTIRE TERMINAL.
 GROUND BRACKET: TIN LEAD PLATED CARBON STEEL.
- 2. THE CONTACT SURFACES OF THE TERMINALS ARE COATED WITH LUBRICANT.
- 3. CENTER-TO-CENTER SPACING OF TERMINALS IS .085 NOMINAL.
- 4 ALL DIMENSIONS SHOWN ARE MAXIMUM UNLESS OTHERWISE SPECIFIED.
- 5 TERMINAL 1 LOCATED IN THIS ROW FOR STANDARD ORIENTATION.
- 6 GROUNDING BRACKET RETAINS CONNECTOR IN .062 THICK PC BOARD WITHOUT ADDITIONAL HARDWARE.
- 7 GROUNDING BRACKET LOCATES CONNECTOR FLUSH WITH TOP OF PC BOARD AND SPRING LOCKS BENEATH.
- 8 CYLINDRICAL SHAPE OFFERS 180° OF SOLDERING SURFACE.
- 9 SURFACE AREA OF GROUNDING BRACKET BELOW PC BOARD SHALL PASS SOLDERABILITY REQUIREMENTS IN ACCORDANCE WITH AMP SPEC 109-11-2. DISCOLORATION SCRATHES, SPOTS AND OTHER COSMETIC DEFICIENCIES TYPICAL OF BARREL PLATING PROCESSES ARE ACCEPTABLE PROVIDING PARTS PASS 24 HOUR EXPOSURE AT 95% RH AT 40°C WITHOUT EVIDENCE OF CORROSION.
- 10 BRACKET SUPPLIED BY CUSTOMER.
- 11 TERMINAL 1 LOCATED IN THIS ROW FOR REVERSE ORIENTATION.



SUGGESTED PRINTED BOARD MOUNTING DIMENSIONS SCALE 2:1



SUGGESTED BRACKET MOUNTING CUTOUT DIMENSIONS SCALE 2:1

ORIENTATION	DESCRIPTION	PART NUMBER
REVERSE, VIEW C-C (11)	AS SHOWN	555149-3
STANDARD, VIEW A-A (5)	WITHOUT BAIL CLIPS	555149-2
STANDARD, VIEW A-A (5)	AS SHOWN	555149-1

THIS DRAWING IS A CONTROLLED DOCUMENT.

DIMENSIONS: INCHES	TOLERANCES UNLESS OTHERWISE SPECIFIED:	0 PLC ± .005	1 PLC ± .003	2 PLC ± .002	3 PLC ± .001	4 PLC ± .0005	ANGLES ± .5°
--------------------	--	--------------	--------------	--------------	--------------	---------------	--------------

APVD	W. MILLHIMES	15/FEB/07	NAME	RCPT ASSY, LPF, EXT SHLD, RTANG, 50 POSN, BD LK, BAIL LK, CHAMP	
SIZE	A1	CAGE CODE	00779	DRAWING NO	555149
WEIGHT		SCALE	4:1	SHEET	1 OF 1

CUSTOMER DRAWING